

## VALVE & INSTRUMENTATION PRODUCTS

Effective 1 August 2018

All brands available upon request

### Pressure Relief Valves

**\*Leser, Taylor, Conbraco...**

ASME Section I, III, IV, VIII Designs  
810/820 Pilot Operated - Snap & Modulating  
526 Spring Operated - Metal & Soft Seated  
437 Compact design  
Type 330 Valve Switchover Systems  
Balanced Bellows & Spindle Designs  
Cryogenic Through High Temperature  
PSV Stack Weather Caps (Poly-Vinyl)  
PSV Test Inserts & Outlet stacks (instock)

### Valve Actuation

**Morin - Scotch Yoke**

Engineered Sizing & Selection  
Spring Return & Double  
Acting Electro-Hydraulic Actuator  
Mounting Kits

**Biffi - Electric**

Engineered Sizing & Selection  
Multi-turn & Quarter Turn

**Bettis - RPX**

Rack and Pinion

### Valve Positioners

**Westlock**

Local & Remote Valve Position Indicators  
Smart Valve Position Transmitters  
Limit Switches  
EPIC II Intelligent Transmitter w/ Valve Diagnostics

### Custom Control Panels

ESD & High-Low Configurations  
In Stock Panel Accessories - BWB Sensors & Controls

### Flame Management

**Belgas**

Inline Flame Arrestors  
Vented Flame Arrestors  
Pilots Assemblies  
Adj. choke stems & seats



### Specialty Valves & Products

**Schuf - Fetterolf**

Automatic Recirculation Valves Diverter Valves  
Line Blind Valves  
Sampling Valves

**Remington Valve**

Severe Service Isolation Ball Valves  
Double Block & Bleed Valves  
Sampling Valves

### Ball Valves

**KF, WKM, Balon, Warren**

2&3 Piece Trunnion & Floating  
2" FP to 36" FP - ANSI 150#-2500#  
Standards:  
Nace approved MR0175  
API 6D Fire Safe, API 6FA

**REOTEMP**

Temperature Products:  
Bimetallic & Digital Thermometers  
Pressure Products:  
Gauges & Seals  
Transmitters  
Manifolds

### Instrument Valves

**\*Emerson (Anderson Greenwood)**

Needle Valves & Mini-Valves Manifolds  
& Direct Mount Systems Gauge, Root, &  
Bleed Valves Instrument Enclosures &  
Sunshades Thermowells

### Sight Glass

**Questtec Solutions**

Armored Tubular - up to 10 ft  
Glass-Trac: Reflex & Transparent Gauge valves

### EZ Flow Chokes

**Belgas**

Flanged & Threaded bodies  
Talco 1502  
Adj. choke stems & seats



## Measurement & Control

### **SOR Inc**

Temperature Devices:  
Switches - Direct or Remote mount,  
Exp proof Transmitters and Sensors RTD  
and remote mounted, Thermowells &  
Thermocouples

Pressure & Differential Pressure Devices:  
Switches - Dual Hi-Lo Exp Proof  
Bourdon Tube  
Transmitters and Smart PSID Transmitter

Level Devices:  
Side and Flanged mount switch  
Steam trap level switch  
Hi-Lo Exp Proof Multi point  
RF level switch  
Ultra sonic Level Switch  
DP Level Transmitter  
Magnetic Level Indicators

Flow Devices: 1520 OEM

Thermal Differential  
Vane Operated



## Controls & Instrumentation

### **Belgas Control Products**

P7100 Cage & Plug Style Control Valves  
P7200 Closed & Open Yoke Dump Valves  
P7400 No Freeze Liquid Dump Valve  
P4100 Diaphragm Actuated Valve  
P4200 Closed & Open Yoke Dump Valves  
P7400 No Freeze Liquid Dump Valves

### Level Controls

#### **Belgas Control Products**

P8100 Lig Level Controller  
P8400 Liq Level Switch (Electric)  
P8600 Liq Level Switch (Pneumatic)

### Regulators & Accessories

P627 Low/High Pressure Reg  
P630 High Pressure Reg  
Type P40 Filter Reg  
Type P39 Configurable Gas Reg M5300  
Backpressure reg  
W100 Temperature Controller

### Pumps

Kimray Pump Repairs  
Kimray 40, 90, 210 & 450 Swap Program



## FILTERS / SEPARATORS / COALESCERS

### VESSELS

#### **\* Parker (PecoFacet)**

Process Fluid & Gas Filters  
Coalescing Filter Vessels  
GEMINI Horizontal Coalescer  
Phase Separators  
Mist Removal Separators  
Activated Carbon Vessels



### FILTER ELEMENTS

#### **\* Parker (PecoFacet)**

Pleated Paper / Synthetic  
Coalescing Elements  
P.E.A.C.H. Synthetic  
Engine / Turbine Intake Air  
Activated Carbon  
String / Synthetic Wound  
Replacement Bags  
F.D.A. Approved Materials



### VESSEL INTERNALS

Wire Mesh Pads  
Vane Pack Assemblies  
Tower Internals  
Replacement Valve Tray Decks



### STRAINERS

#### **IFC Inc.**

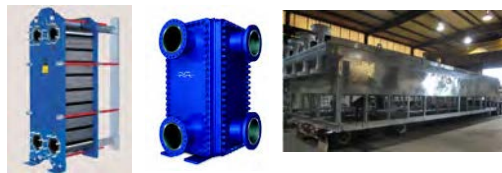
Y and Tee Strainers  
Basket Strainers  
Startup Line Strainers  
Duplex Strainers  
Stock Shipments



## HEAT / MASS TRANSFER PRODUCTS

### PLATE AND FRAME

Gasketed Plate & Frame Designs  
Spiral Plate Units  
Vaporizers / Condensers  
Welded Plate Design



### Air Cooled

#### **FIN-X**

Process Coolers & Condensers  
Gas and Air Aftercoolers  
High Performance Water & Oil Coils  
Replacement Coils & Louvers  
Retube / Repair - On Site or Shop



### SHELL AND TUBE

#### **Delta Tee**

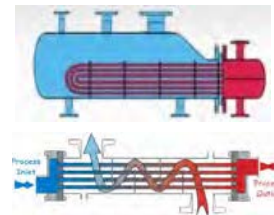
Process Coolers / Heaters  
Condensers / Vaporizers  
Custom Designs - 2" to 60" Diameter  
Replacement Bundles  
TEMA / ASME / SQL China Codes

#### **Thermal Transfer Products**

Off-the-Shelf Shell & Tube / Air Cooled  
Direct Replacements for Other  
Manufacturers Brazed Plate Units  
Air Aftercoolers / Separators

#### **Sumitomo Precision Products**

Brazed Aluminum Heat Exchangers  
Fast Delivery Options  
Stainless Steel Diffusion Bonded Designs



Effective 1 August 2018

## SHOP & FIELD SERVICES, MAINTENANCE & REPAIR

### RELIEF VALVE SERVICES

ASME Certified Valve Assembly / Repair  
Section I & Section VIII Steam Valve Testing & Repair  
Mobile Valve Repair Trailers  
On-Site DOT Testing / Repair / Certification  
Regulator Testing & Repair  
Web Based Client Test Reports  
Large OEM repair part inventory for major relief valve manufacturers including: Leser, AGCO, Crosby, Taylor, Farris, Mercer, Hydroseal, Conbraco, Consolidated, etc



### VALVES/ACTUATORS & CONTROLS

Inspection, Testing, and Repair for all manufacturers of:

- Ball Valves
- Control Valves
- Butterfly Valves
- Check Valves
- Plug Valves
- V-Balls
- Gear Operators
- Actuators (scotch yoke, rack & pinion, rotary, electric)

### HEAT EXCHANGERS

Repair Services & Parts for All Manufacturers  
High Performance Replacement Bundles  
Tube lancing services  
Gasketed Plate Frame replacement



### AIR COOLED COOLERS

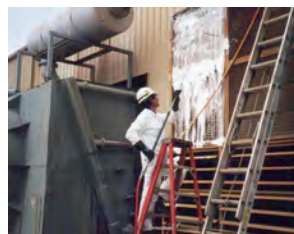
Shop / Field Retube or Repair  
Internal/External Foam Cleaning Service  
Emergency Tube Plugging  
Fan/Bearing Service and Replacement

Process Equipment Installation  
B31.3 Shop and Field Welding  
ASME Code Stamps: "U", "UV", "VR", "R", "T/O"  
ASME Code Vessel Modification  
Filtration skid rentals, including delivery, set up, and operation  
Kimray Pump Repairs

## **SAFETY FIRST MINDSET**

### PROJECT SERVICES

Turnkey Project Management (Plant Shutdowns)  
Turnkey Full Vessel Replacements  
Specializing in Confined Space Work  
D.O.T. Operator Qualified Personnel  
Hydraulic Torquing  
Used Equipment Sales & Refurb  
Meter Tube Cleaning  
Amine and TEG Dehy System Flushing and Steaming



### TOWER & VESSEL INTERNALS

Installation and Troubleshooting  
Tower Tray Inspection & Repair  
Turnkey Filter Element Change outs  
Mole Sieve Dehydration Unloading and Loading

D.O.T. Valve Greasing  
ESD Design and Installation

Level Control Installation / Repair / Calibration  
Complete Valve Specification Services



\* Territory specific

• Corporate Office- Shreveport, LA • Louisiana • Texas • Oklahoma • Arkansas •